

FlightStream®

Network/Local License Installation

1 Introduction

DARcorporation uses the Wibu-Systems CodeMeter technology for the FlightStream® software licensing. CodeMeter stores the software license securely in CmActLicense, a computer-bound license file, or a USB dongle CmDongle, hardware-based security.

The license is saved in a special file that is bound to the hardware of the target computer or stored securely in a CmDongle. The CmDongle device embeds a smart card chip, which offers additional security to CodeMeter technology. The designated target computer, referred as the license server, can provide license access locally or on a network. All computers running FlightStream® must be able to access the license server where FlightStream® uses the license server CodeMeter Runtime Server (CodeMeter.exe). On Windows, this server can be started as a system service or as an application.

The license server is a computer with the CodeMeter Runtime software installed and is additionally running the CodeMeter Runtime Server process. CodeMeter Runtime License Server is protocol based (TCP/IP), so it requires TCP/IP support of the network and a proper installation of TCP/IP on the server and all client machines. Port 22350 must be opened for TCP and UDP use. The client machine is a computer on which FlightStream® runs. The client machine and the license server can be the same machine if FlightStream® were to run locally.

The number of licenses can be increased or decreased in a simple fashion by contacting DARcorporation. No new hardware is needed; a file can be exchanged via Internet or e-mail to change the CodeMeter license contents.

We recommend reading through the complete document first and then following the installation steps of Section 2.

2 Install Procedure

You must have administrative rights to complete the following steps. Installing the software with license(s) on a network or locally consists of the following steps:

- STEP 1 Close any programs that are running on the computer where the software is being installed.
- STEP 2 Download and save CodeMeter Runtime installer using this link <https://tinyurl.com/3uy4rmdx>
- STEP 3 Right-click on the CodeMeter Runtime installer and select **Run as administrator**. Setup window shown in Figure 2.1 will pop up.

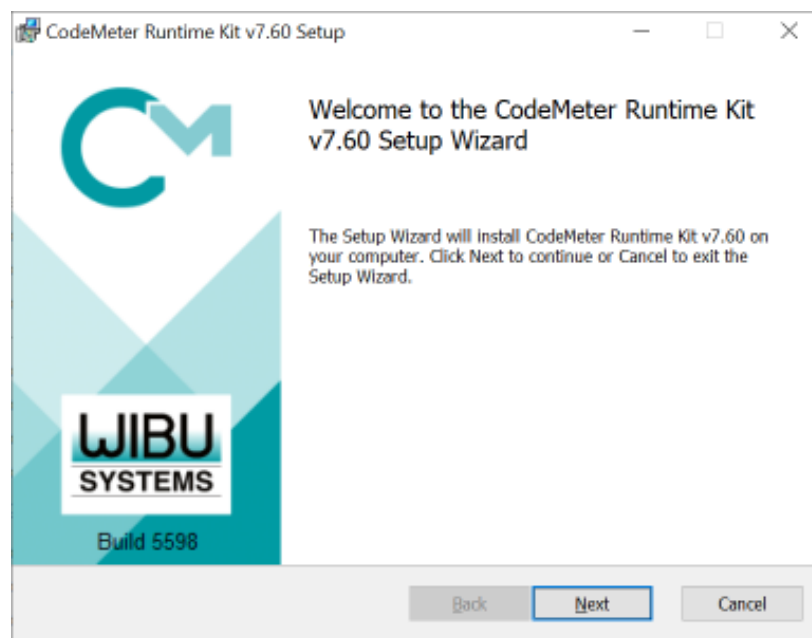


Figure 2.1 CodeMeter Runtime Kit Setup Window

STEP 4 Use default settings in Custom Setup during CodeMeter Runtime Kit Setup (See Figure 2.2). For computer designated as license server for a network environment, select to install the Network Server and Remote access to WebAdmin options.

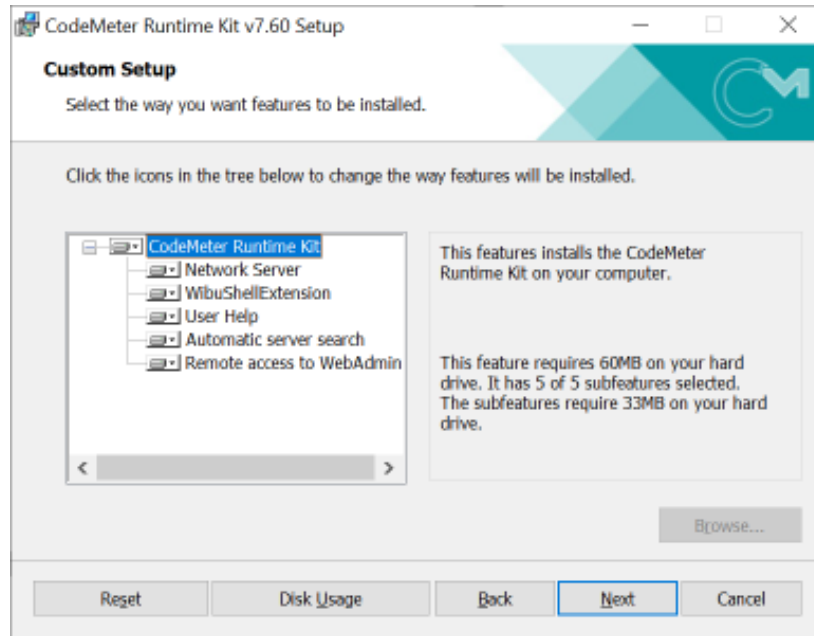


Figure 2.2 CodeMeter License Information File

STEP 5 Download and save LicTemplateDisc.WibuCmLIF file (See Figure 2.3) provided via e-mail attachment. If CodeMeter license has been processed, skip to Step 14.



Figure 2.3 CodeMeter License Information File

STEP 6 Launch CodeMeter Control Center. Then drag and drop the saved LicTemplateDisc.WibuCmLIF file on the CodeMeter Control Center window (See Figure 2.4).

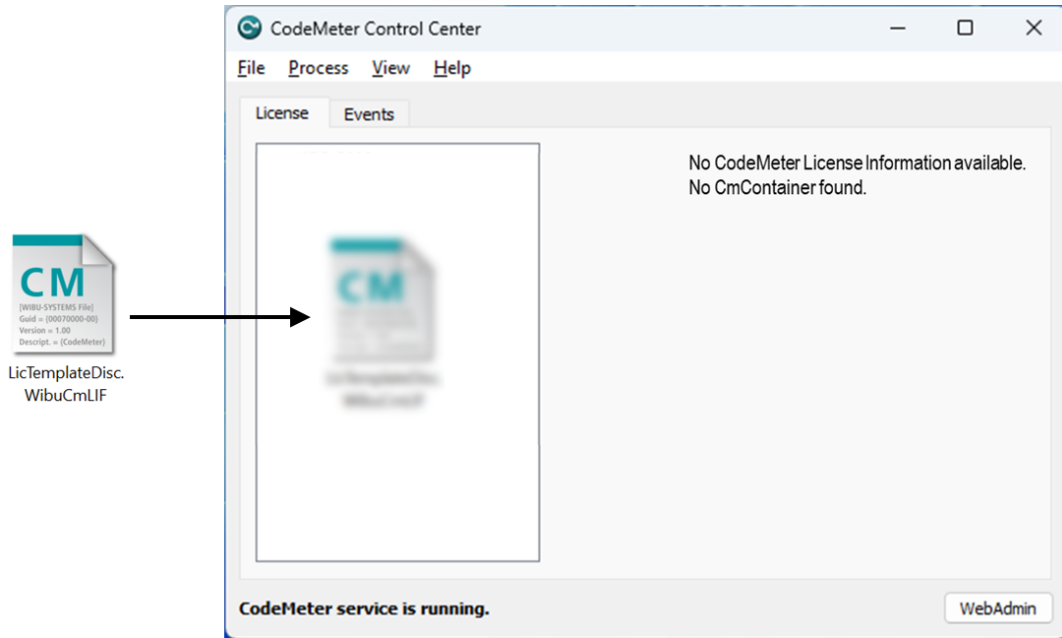


Figure 2.4 Load CodeMeter License Container into CodeMeter Control Center

STEP 7 A message will indicate the license import is successful (See Figure 2.5).

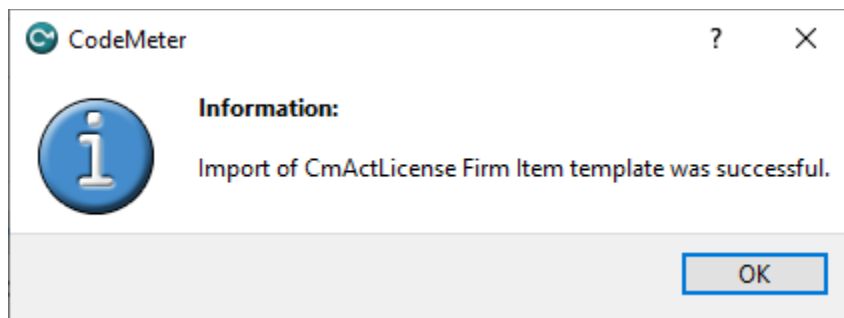


Figure 2.5 Successful Import of CodeMeter License Container into CodeMeter Control Center

STEP 8 Click on the License Update button (See Figure 2.6).

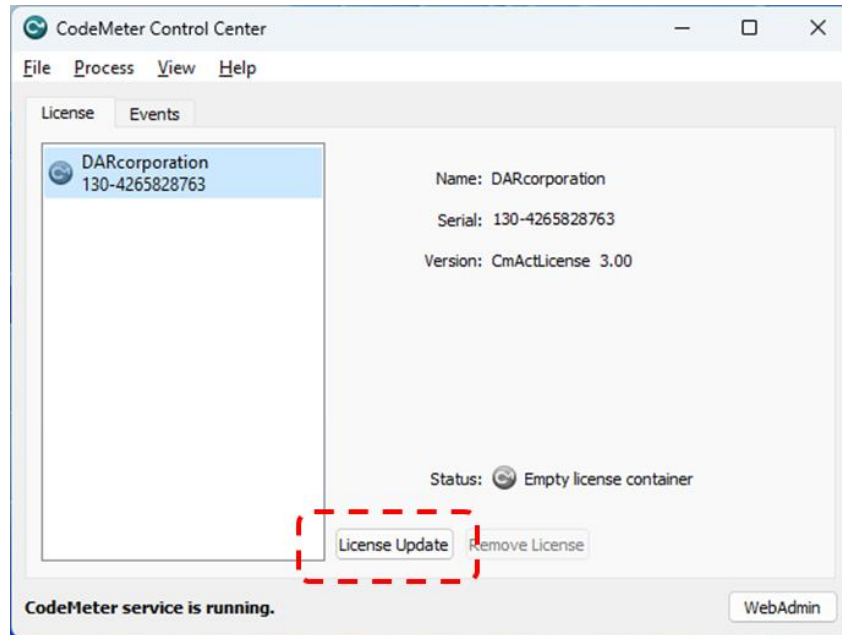


Figure 2.6 License Update for CodeMeter Control Center

STEP 9 Follow the onscreen CmFAS Assistant dialog to create a license request.

STEP 10 Specify the location to save the WibuCmRaC License Request file (See Figure 2.7) and then click on Commit button.

Note: Keep the serial number. XXXXX would be your company/name and YYYY would be the date of request made. E.g. Feb-01-2023.

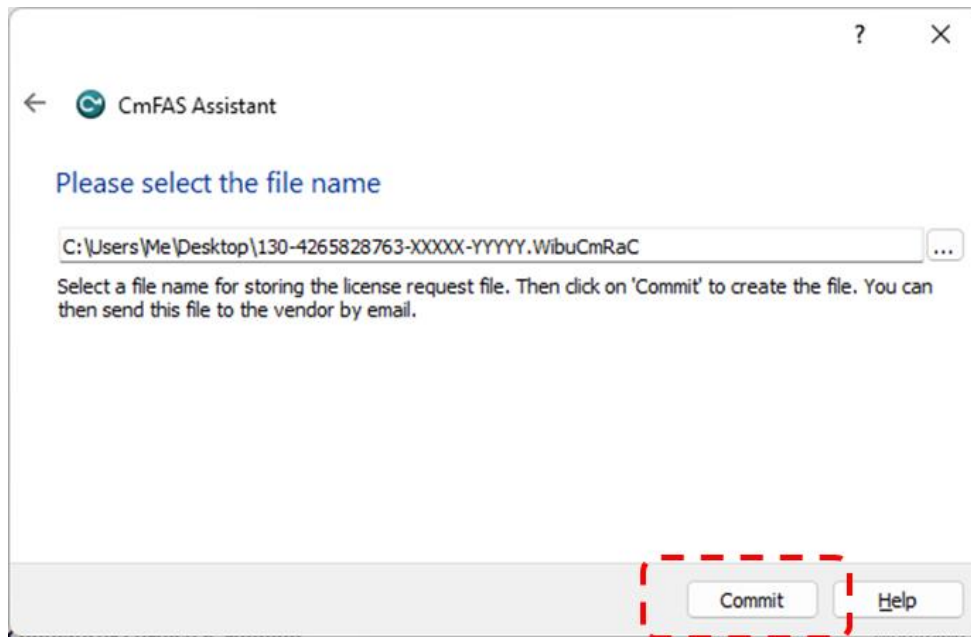


Figure 2.7 Save WibuCmRaC File using CmFAS Assistant

STEP 11 Once the *.WibuCmRaC License Request file is generated, please e-mail it to support@darcorp.com. You will then receive (via e-mail) a License Update file *.WibuCmRaU to complete the license installation.

STEP 12 Launch CodeMeter Control Center. Then drag and drop the saved *.WibuCmRaU file on the CodeMeter Control Center window (See Figure 2.8).

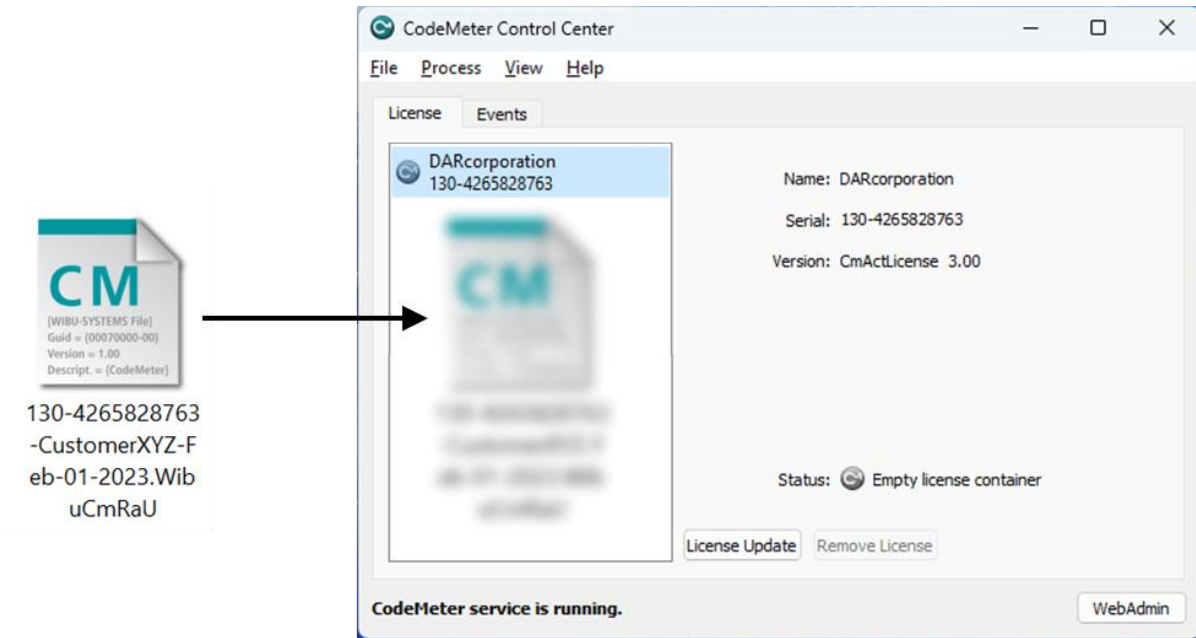


Figure 2.8 Load CodeMeter License Container into CodeMeter Control Center

STEP 13 A message will indicate the license has imported successfully.

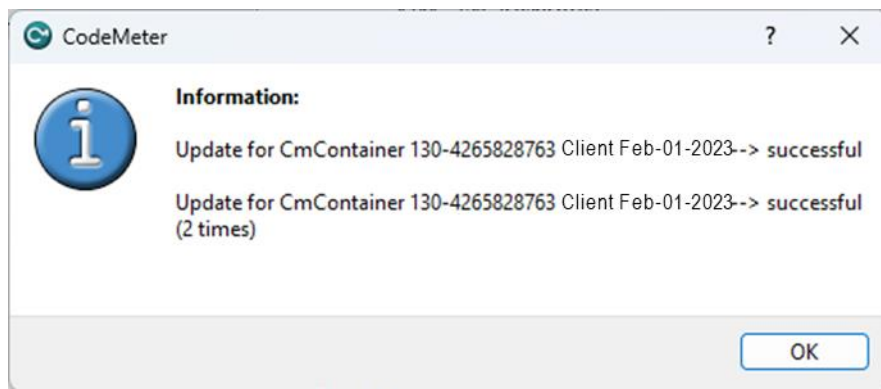


Figure 2.9 CodeMeter License Container successfully imported

STEP 14 Download your purchased software using the link(s) (via e-mail) and run the installer(s) with right-click Run as Administrator option.

STEP 15 Proceed with the FlightStream® installation wizard as shown in Figure 2.10.

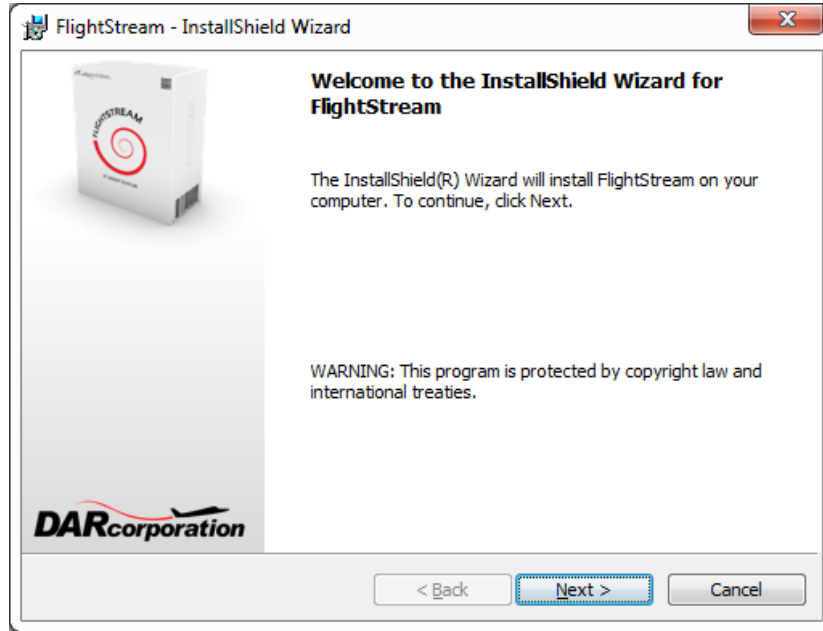


Figure 2.10 FlightStream® Installation Window

STEP 16 During FlightStream® installation, please select **Anyone who uses this computer (all users)** option when prompted (See Figure 2.11).

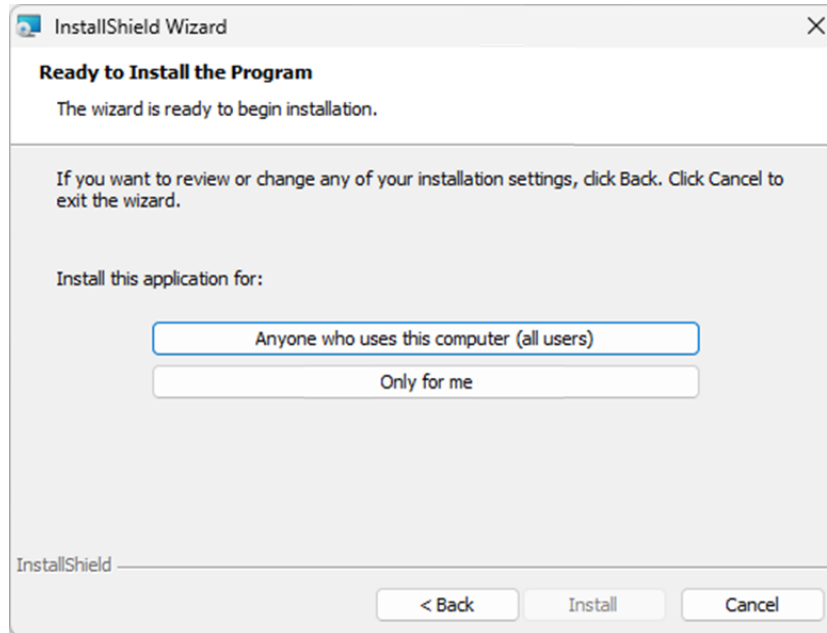


Figure 2.11 FlightStream® Installation Option

STEP 17 Complete FlightStream® installation by clicking on *Finish* button shown in Figure 2.12.

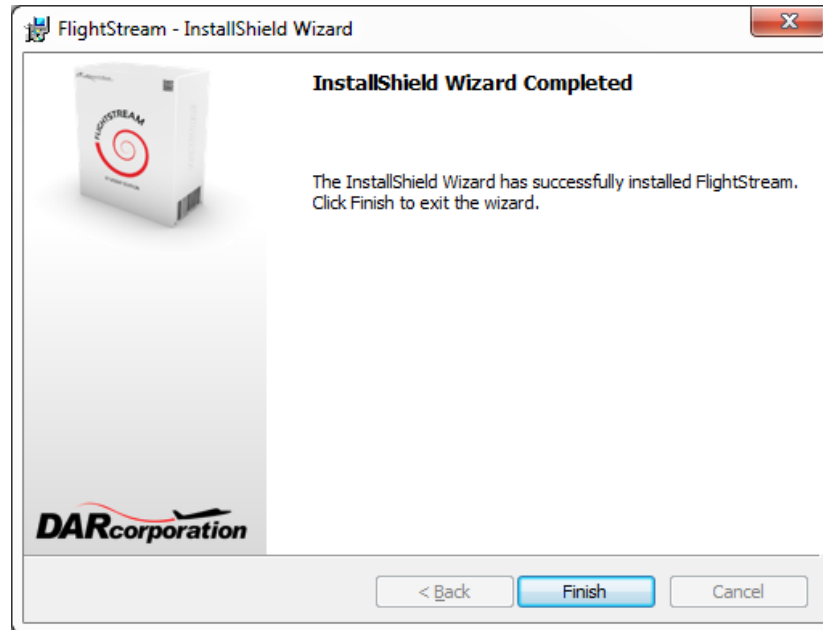


Figure 2.12 FlightStream® Installation Completion

STEP 18 Start FlightStream® on your computer. Install and run FlightStream®, with CodeMeter Runtime installed, on any computer on the network.

3 CodeMeter Software

When the CodeMeter Control Center software is installed on the server or client computer, a program icon is added to the Windows Start Menu. This icon executes the CodeMeter Control Center software.

The program shows the contents of the CodeMeter license (see Figure 3.1), CodeMeter service status (lower left corner) and the option to launch the WebAdmin user interface.

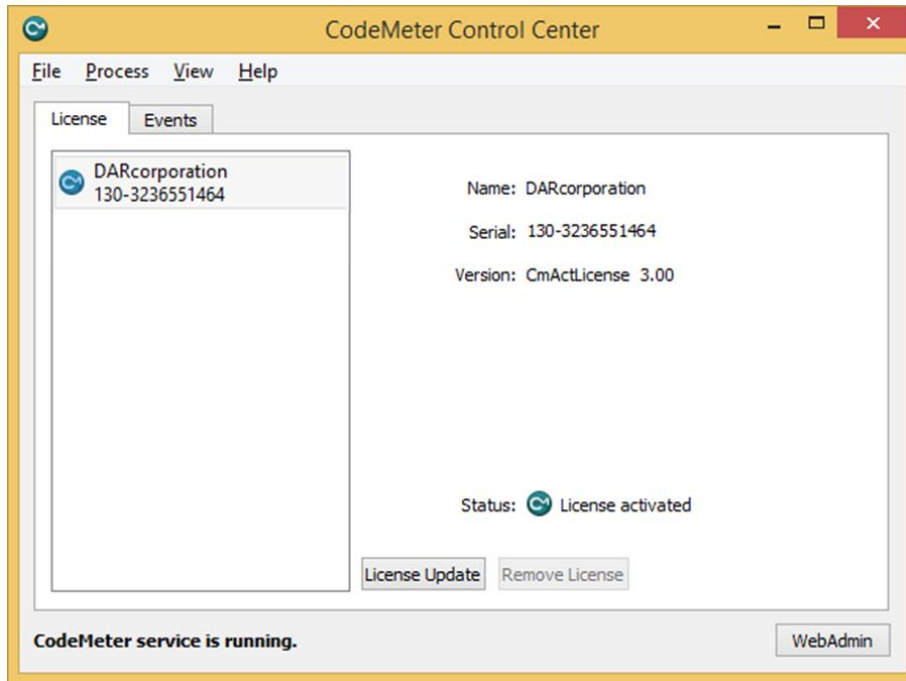


Figure 3.1 CodeMeter Control Center

After the CodeMeter service has started, the Events tab can be displayed showing network activity (see Figure 3.3).

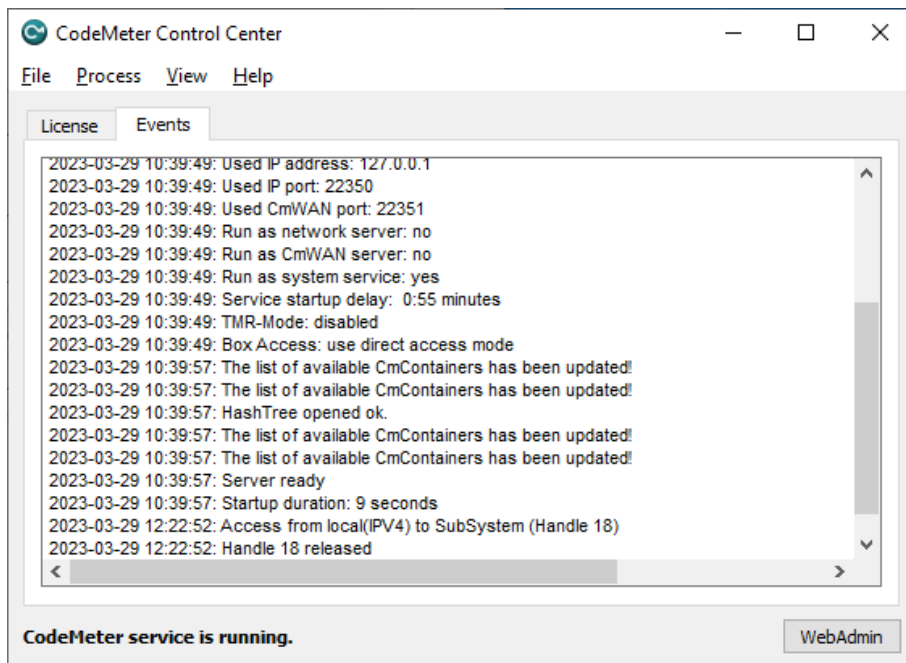


Figure 3.3 CodeMeter License Server Network Activity Log

Normally, no special configuration changes are needed on the client side to access CodeMeter Runtime License Server. Click on the WebAdmin button to launch the WebAdmin browser user interface. CodeMeter WebAdmin is based on HTML code including Javascript. A client computer browses the local network or local computer for a suitable CodeMeter server. For FlightStream® the “Configuration | Basic Configuration | Server Search List” tab is important. On the Basic Configuration Server Search List (see Figure 3.4) a specific license server name or IP address can be added. Under “Configuration | Advanced Configuration | Extra” tab (see Figure 3.5), the default TCP/IP port 22350 can be changed, if this number conflicts with port numbers used by other TCP/IP applications. Changing the port number must be done by the CodeMeter Control Center at the server side and on all clients where a CodeMeter license server access is desired.

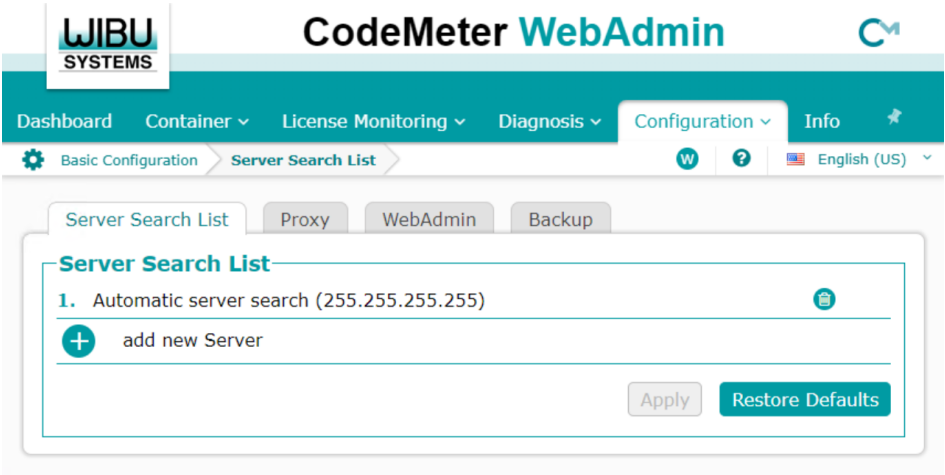


Figure 3.4 CodeMeter WebAdmin Basic Configuration

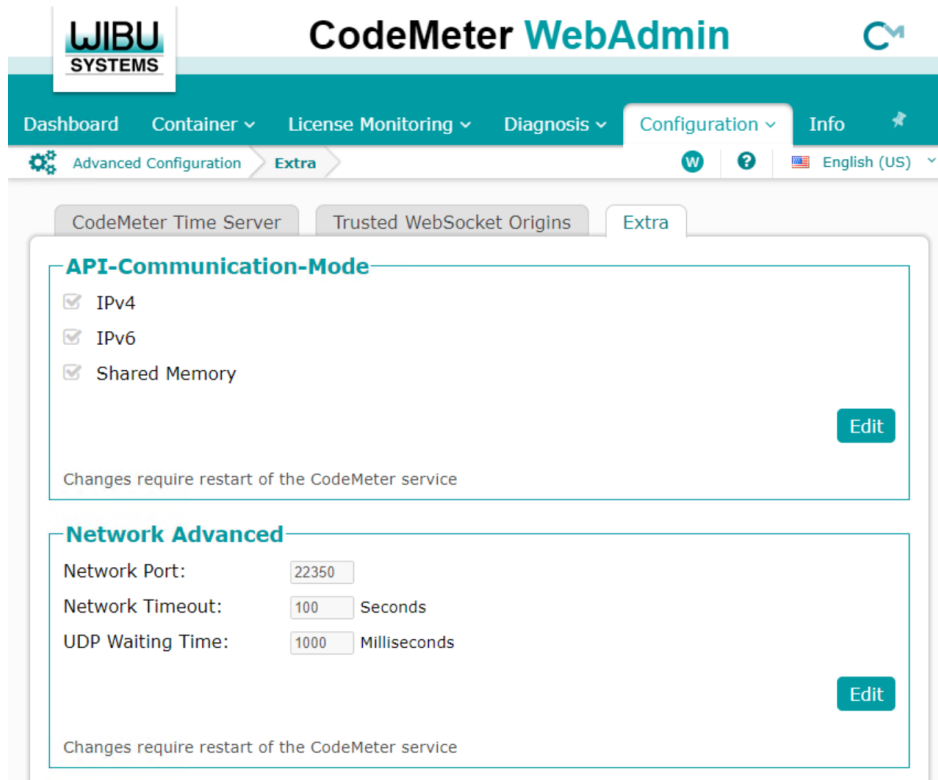


Figure 3.5 CodeMeter WebAdmin Advanced Configuration

As part of the CodeMeter software installation, CodeMeter WebAdmin (see Figure 3.6) is included to monitor FlightStream® activities with CodeMeter.

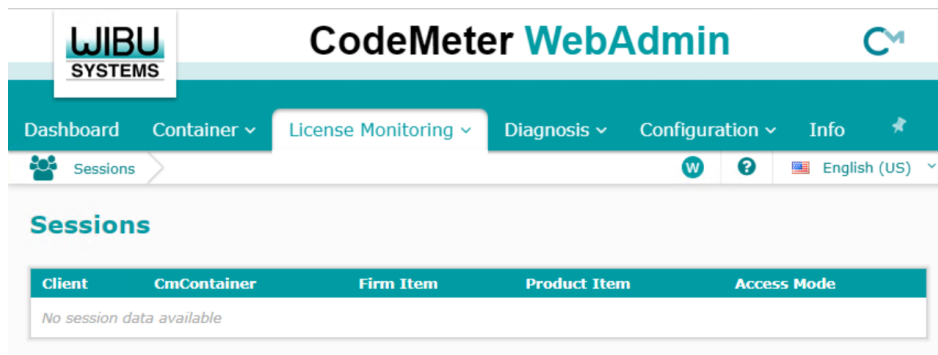


Figure 3.6 CodeMeter License Monitoring

Launch CodeMeter WebAdmin from CodeMeter Control Center and click “License Monitoring | Sessions” to launch the CodeMeter License Monitoring.

4 Reporting Software Errors

We at DARcorporation want to know about potential errors in the software so that we may correct them as soon as possible. If you feel that you have encountered an error in the software user interface, license manager, module calculations or module calculation methods, software errors can be reported to the software support department at:

Phone: (785) 832-0434
E-mail: support@darcorp.com
Internet: www.darcorp.com